

# Orthopedic and Medical

*Knitted Elastic - Latex Free*

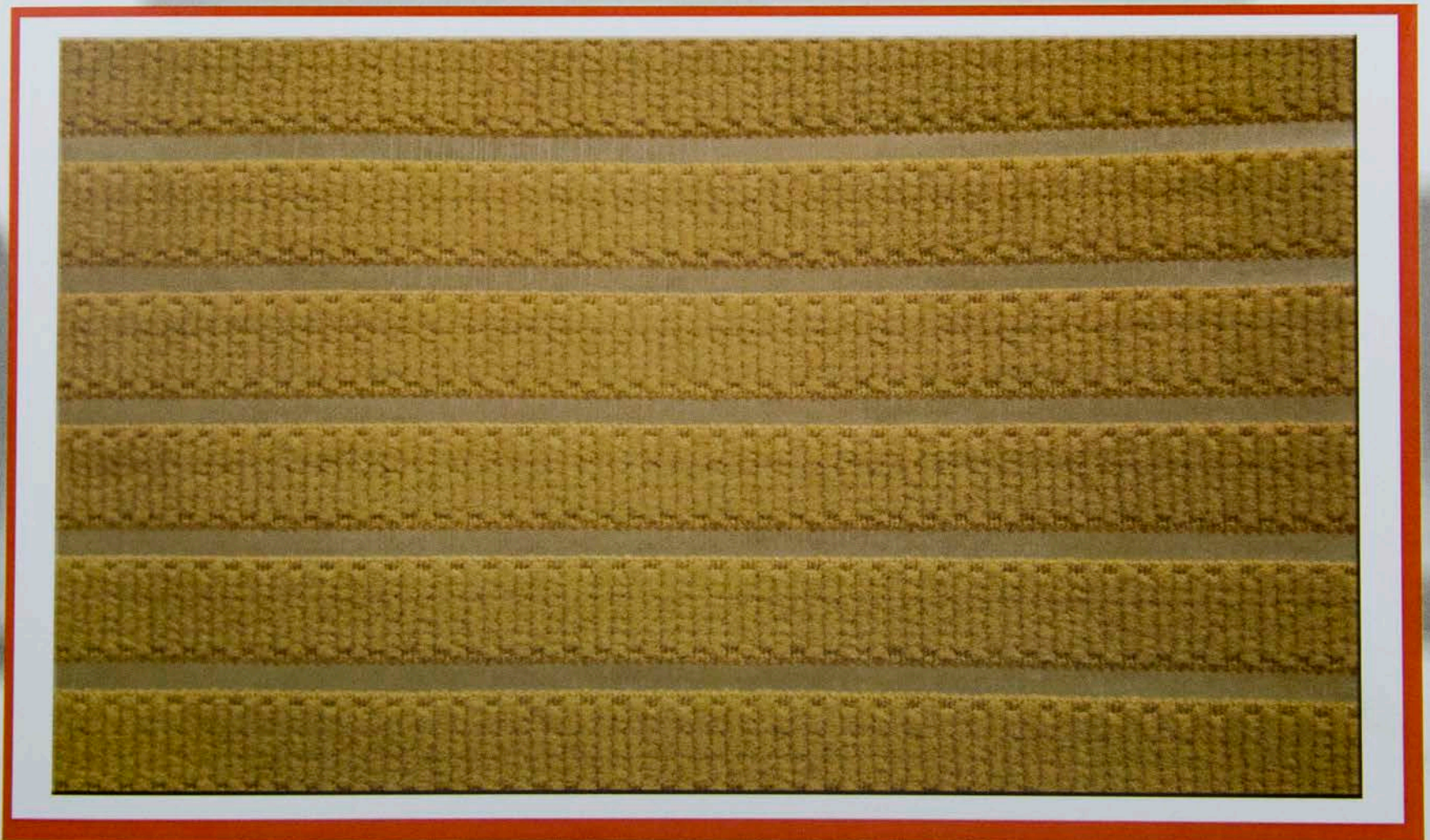


828

High Pile Plush

1.5", 2", 3", 4", 6", 9", 10", 12"

Optical White, Pastels



829

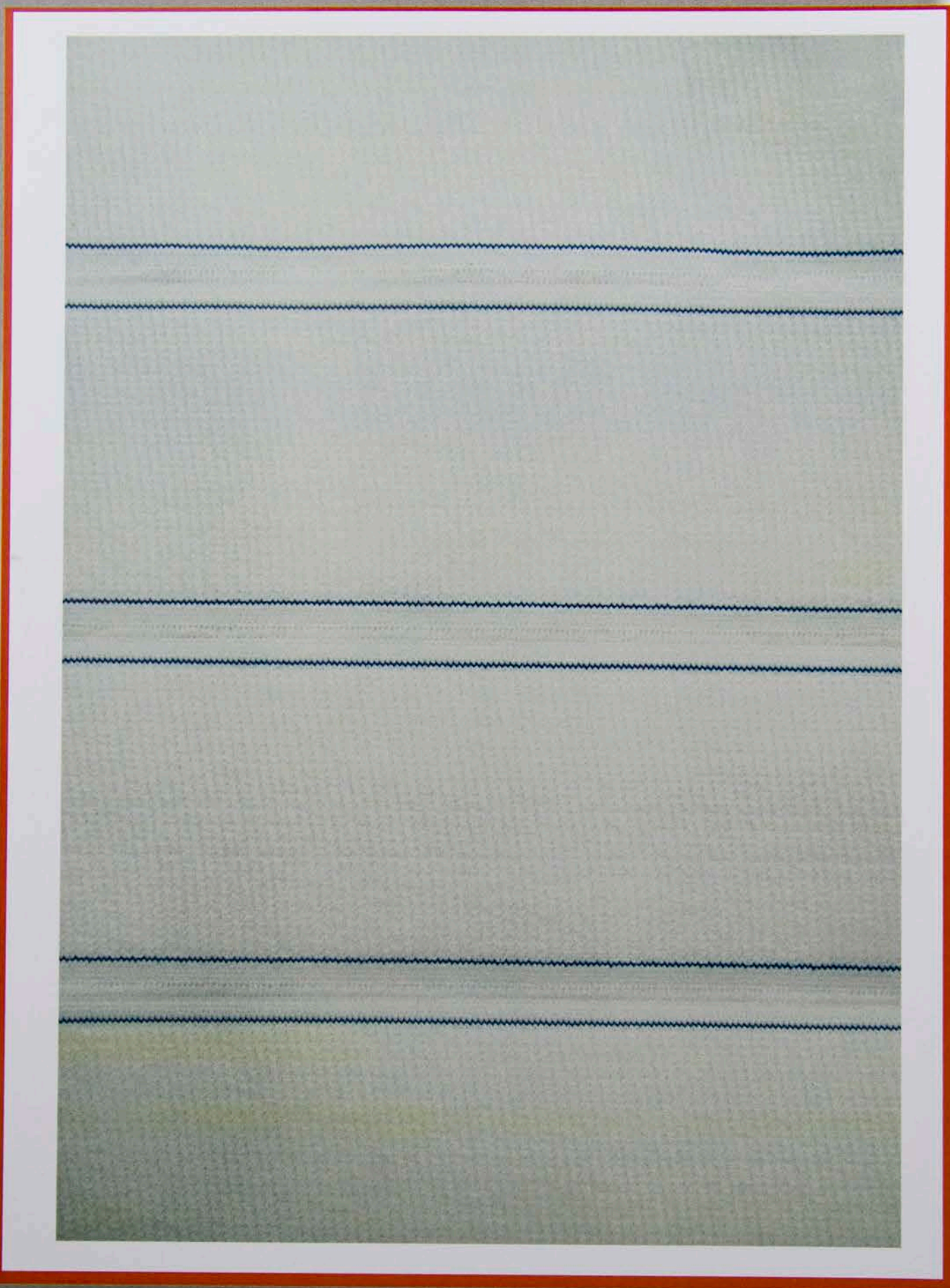
Monofilament Breathable Elastic

3", 4", 6", 9", 10", 12"

Optical White, Beige, Black

# Orthopedic and Medical

*Knitted Elastic - Latex Free*



845

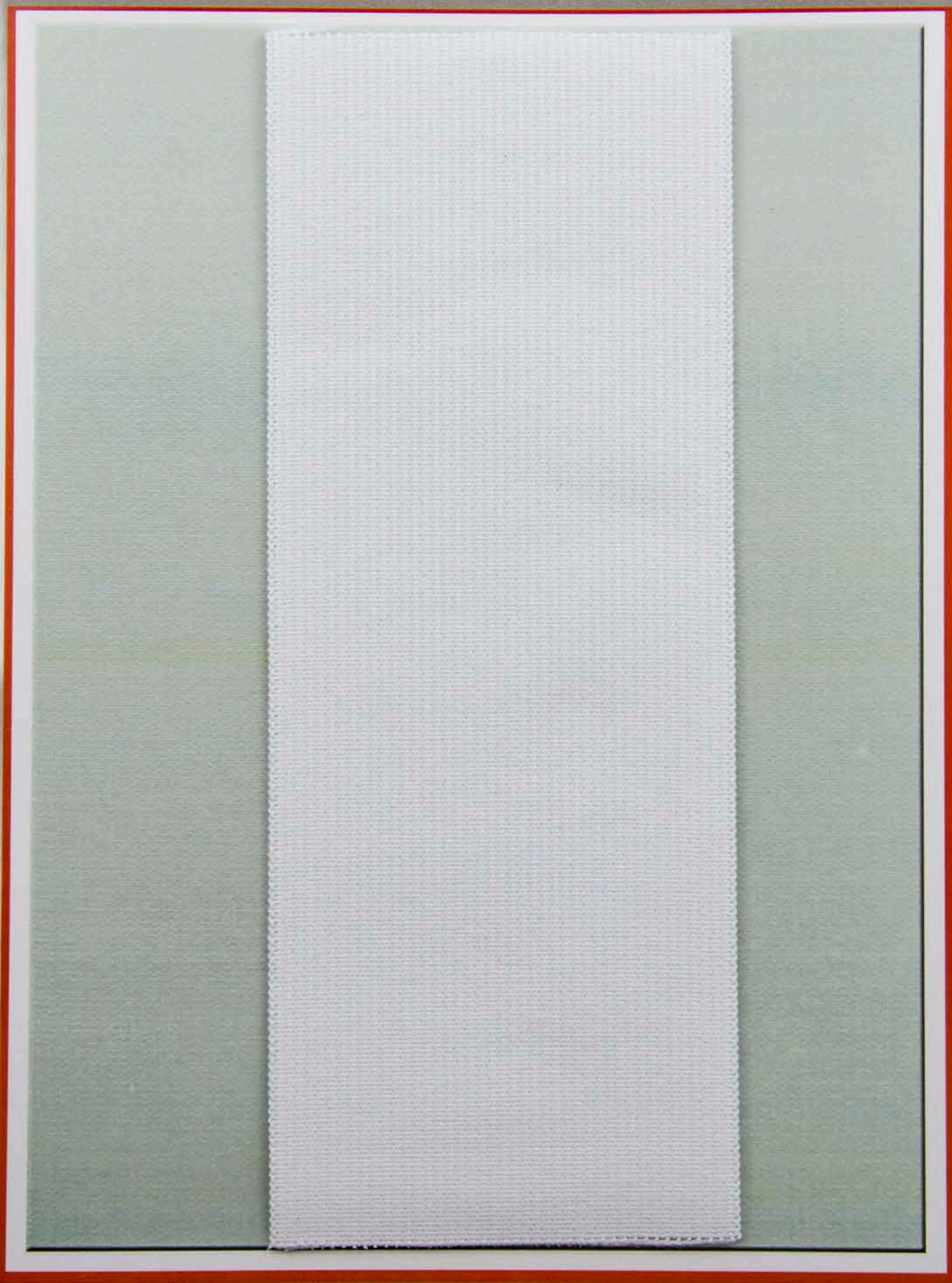
Hook Engageable Panel

3", 6", 9", 12"

Optical White, Beige

# Orthopedic and Medical

*Knitted Elastic - Latex Free*



747

Support Elastic

3", 4", 5", 6", 8", 9", 10", 12"

Optical White, Beige, Black

# Orthopedic and Medical

*Woven Elastic- Latex Free*

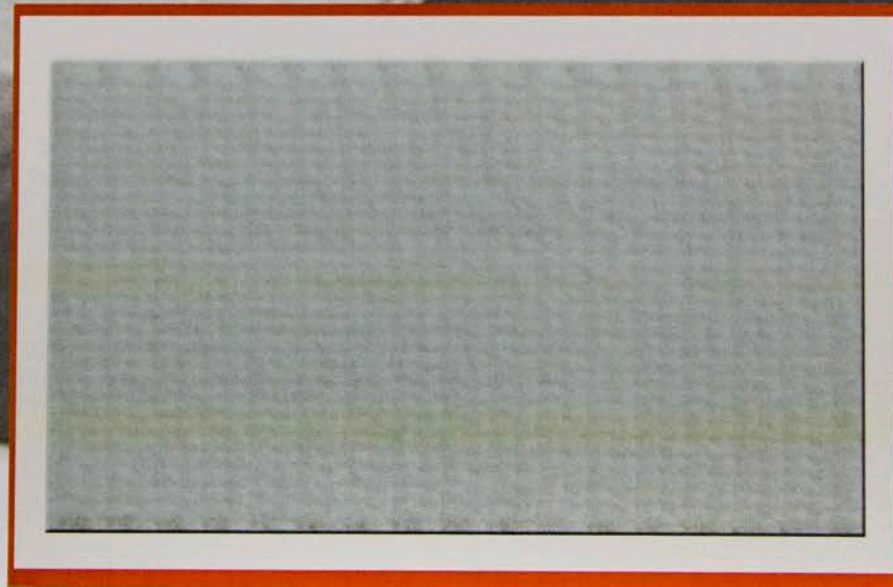


6099

Hook Engageable Individual Panel Elastic

3"

Optical White, Beige



816

Hook Engageable Catheter Elastic

1", 1.5", 2"

Optical White, Beige

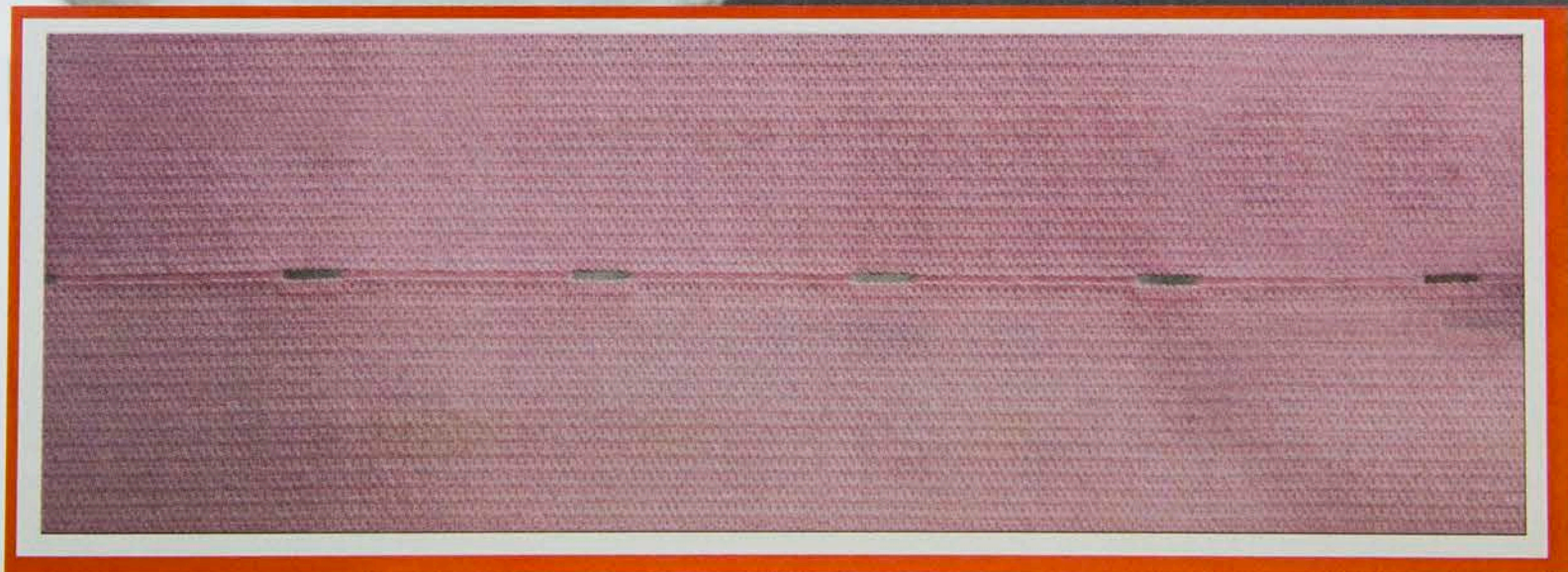
# Orthopedic and Medical

*Woven Elastic- Latex Free*



897

Monofilament Elastic  
2", 3", 4", 5", 6", 9", 12"  
Optical White, Colors



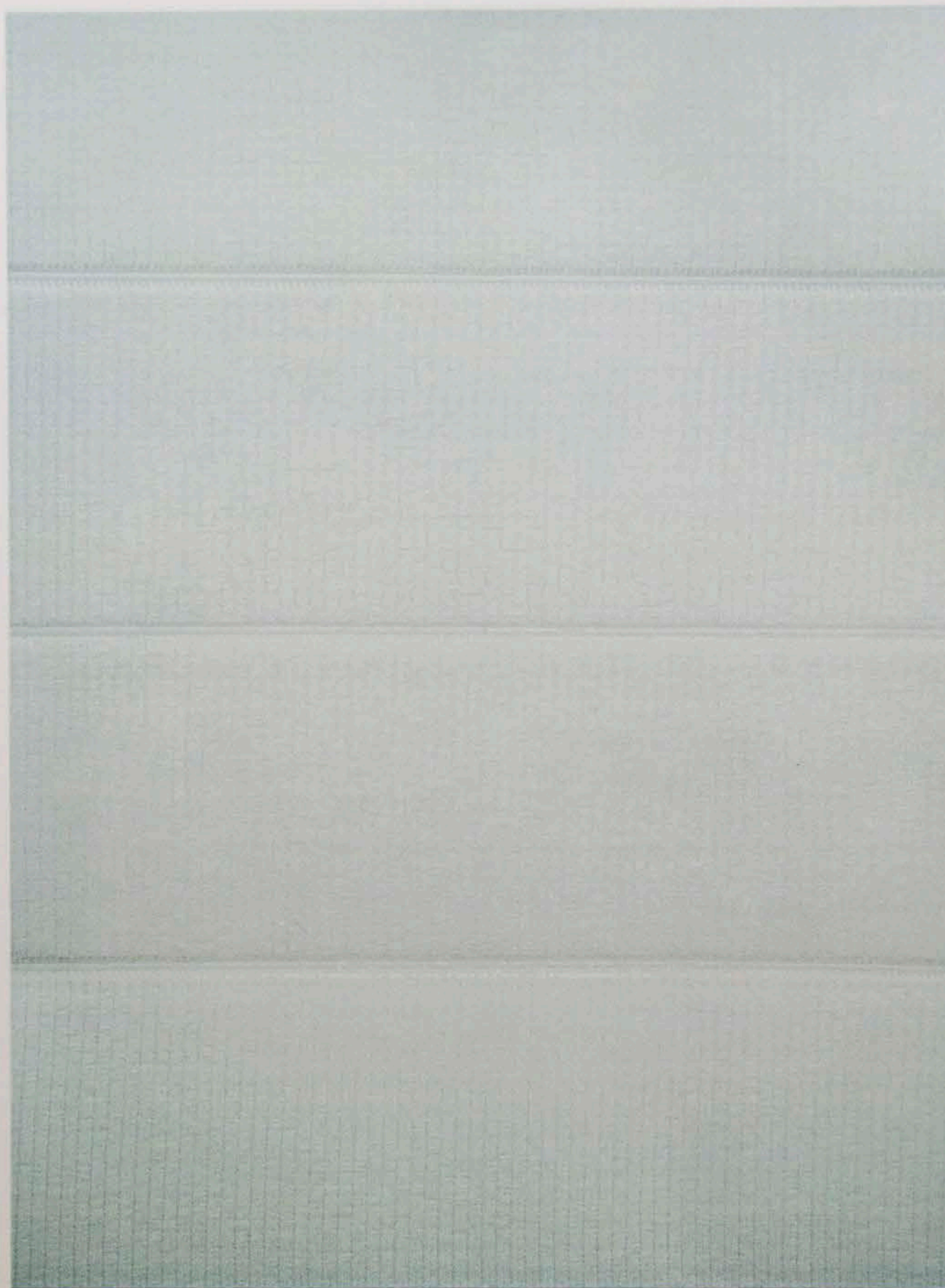
396/824

Button Hole Elastic  
2 3/8"

Ink Blue, Optical, Black, Baby Blue, Baby Pink

# Orthopedic and Medical

*Woven Elastic- Latex Free*



836

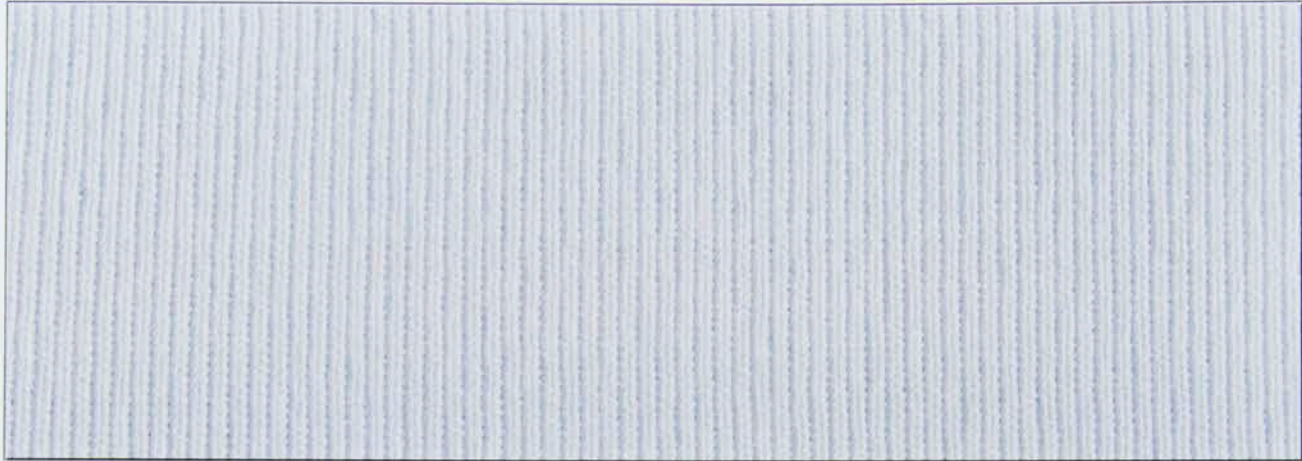
Hook Compatible Panel Elastic

3", 6", 9", 12"

Optical White

# Orthopedic and Medical

*Woven Elastic- Latex Free*

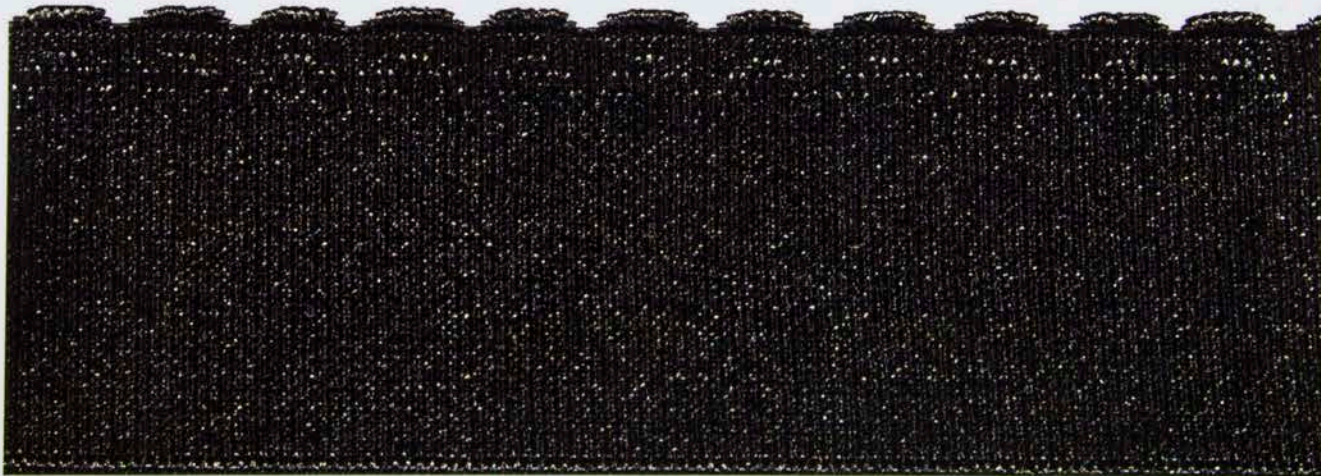


896n

Catheter and Ice Pack Elastic

1.5", 2", 3"

Optical White



866nz

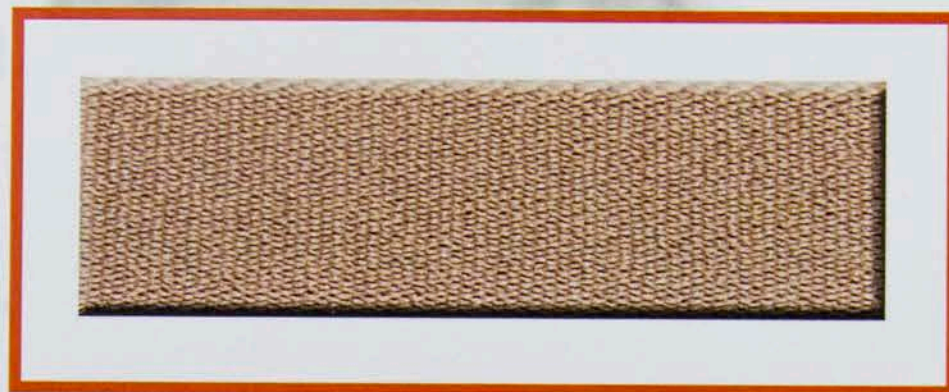
Mastectomy Bra Elastic

1 7/8"

Optical White, Black

# Orthopedic and Medical

*Woven Elastic- Latex Free*



6206

Hernia Belt and Compression

1", 2"

Sand



# Orthopedic and Medical

## *Hook Compatible Stretch Loop*



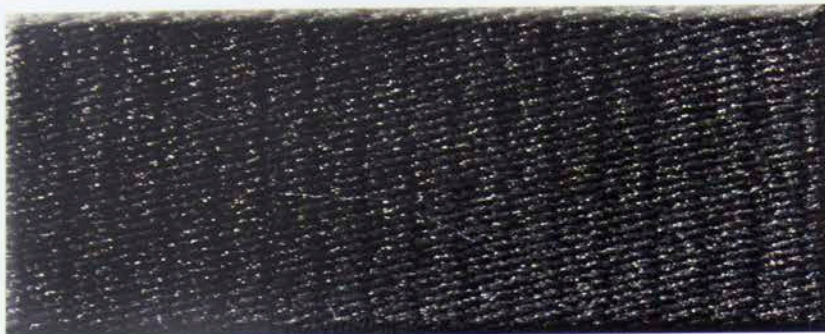
6222

1", 1.5", 2"

White, Black, Beige

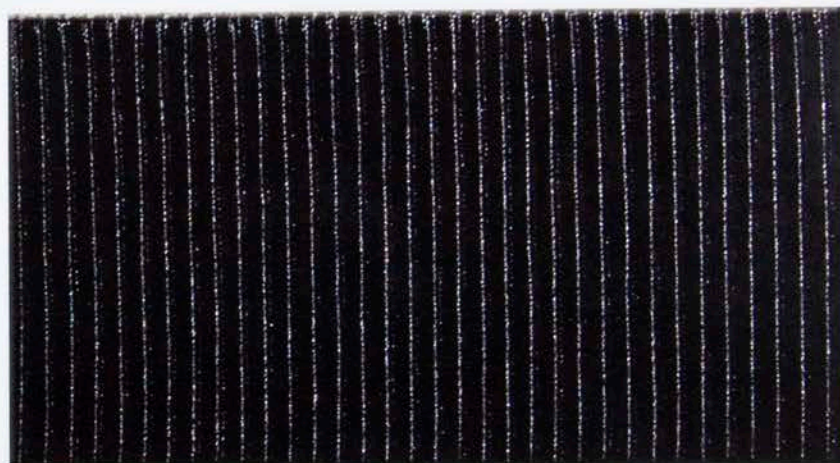
# Industrial Safety

## *Back and Wrist Supports*



6062  
Woven Elastic  
1 7/16"  
Black, Colors

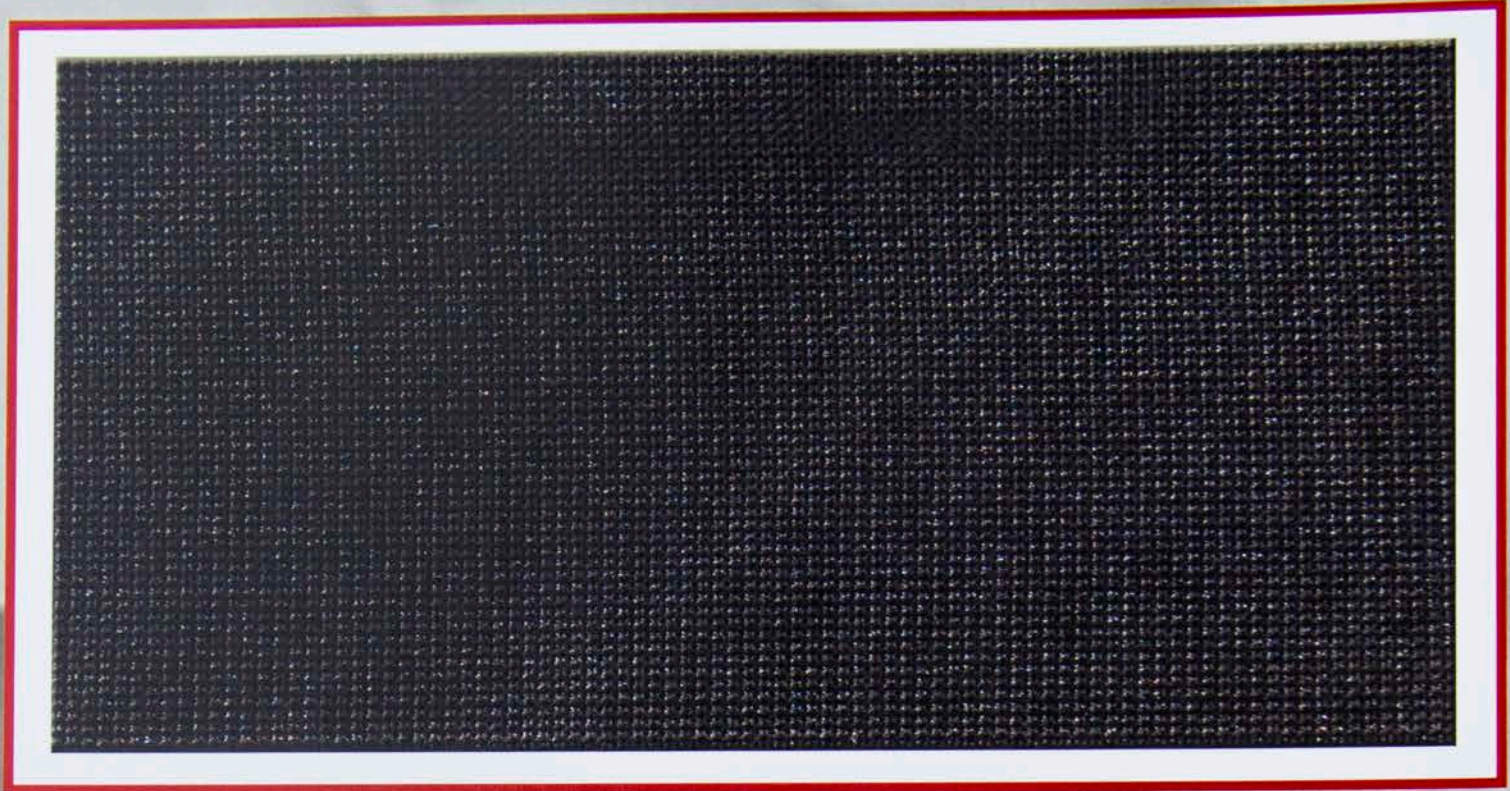
1130  
Woven Elastic  
2"  
Black, White



980  
Woven Elastic  
2", 4", 6", 8", 10", 12"  
Black, Colors

# Industrial Safety

## *Back and Wrist Supports*

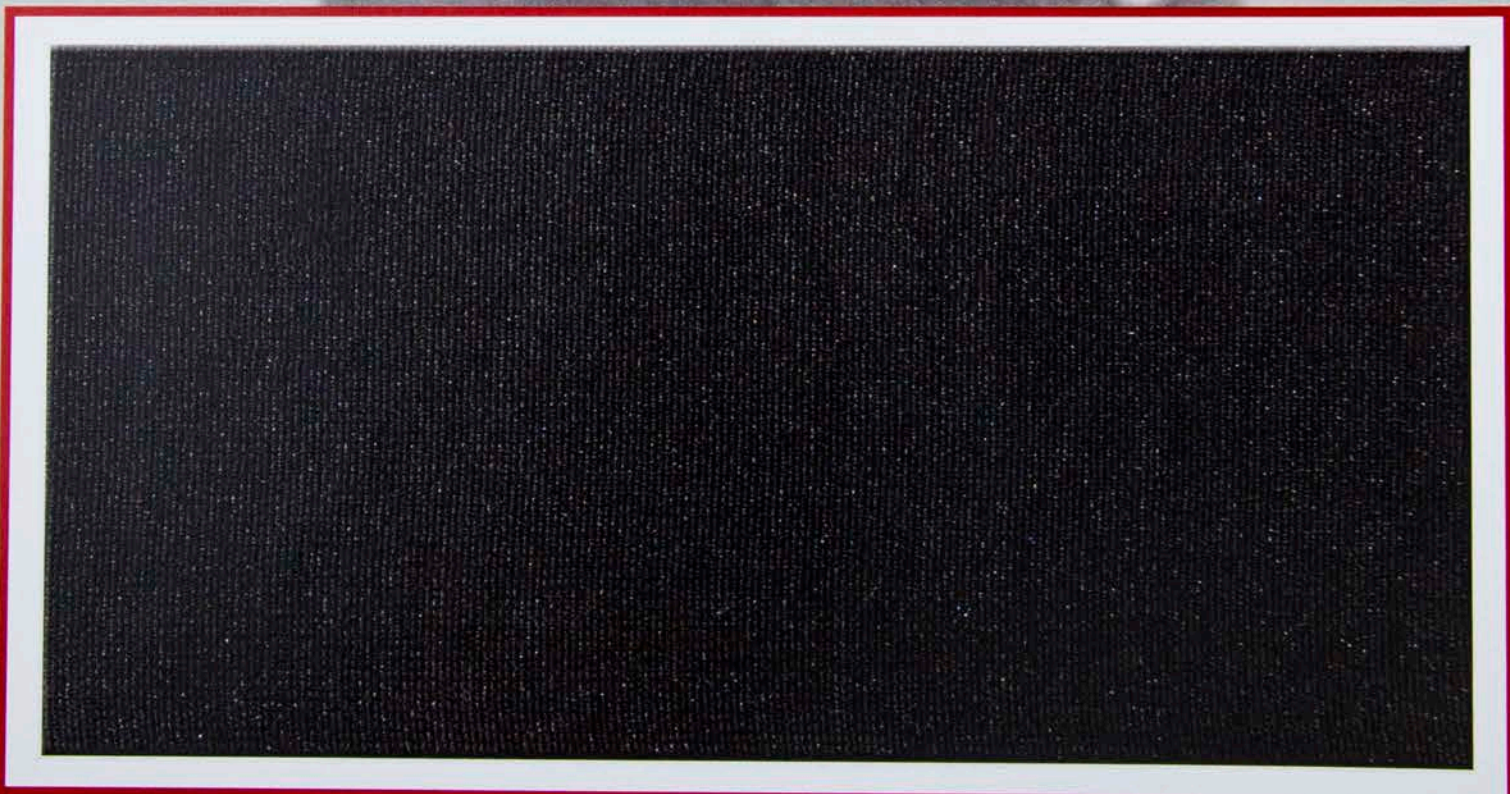


755

Knitted Elastic

1 1/4", 1 1/2", 2", 3", 4", 6", 9", 10", 12"

Black, ANSI Orange, Colors



767

Woven Elastic

1 1/4", 1 1/2", 2", 3", 4", 6", 8", 10", 12"

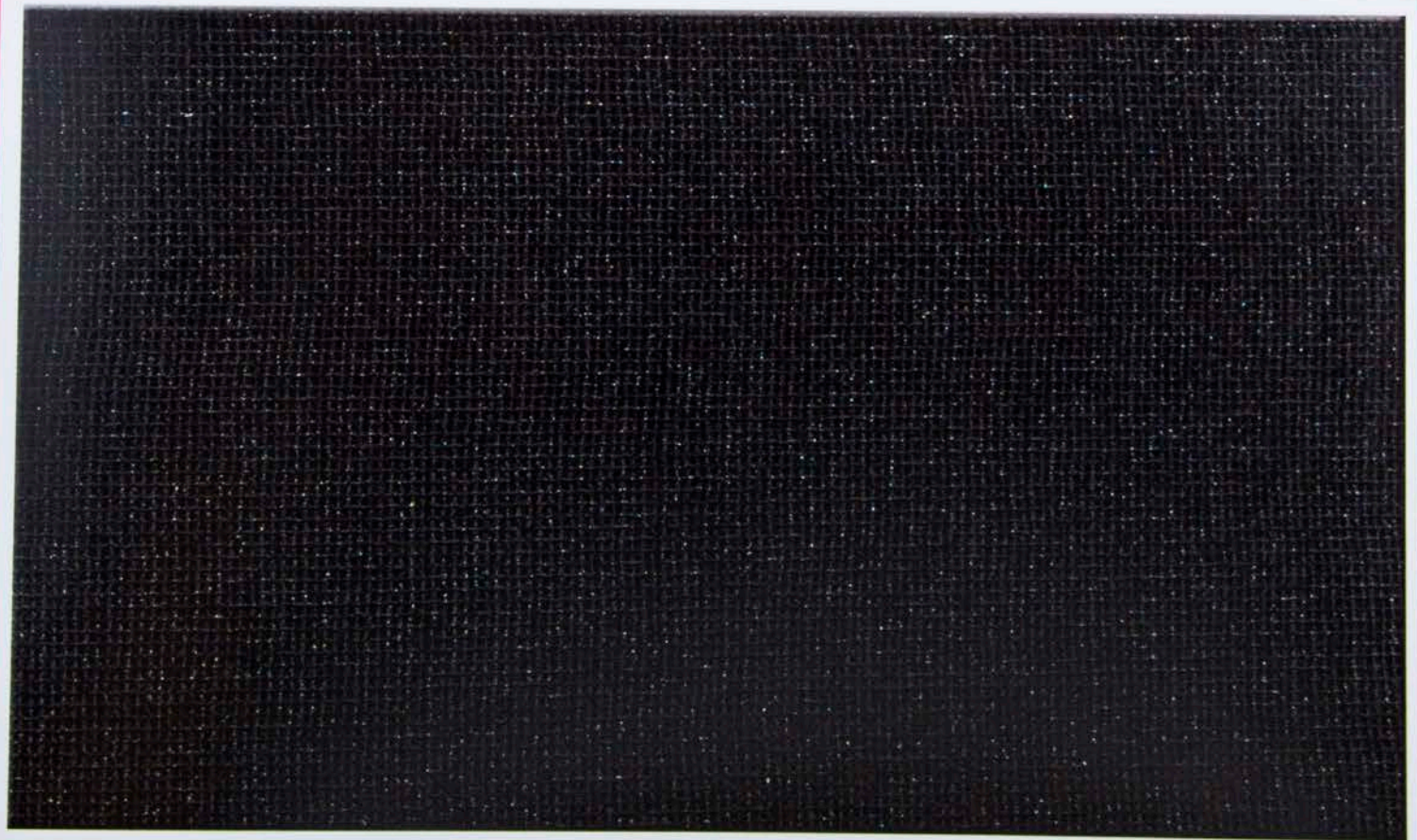
Black, Colors

# Industrial Safety

## *Back and Wrist Supports*



571  
Latex Free Woven  
3"  
Black, White



561  
Latex Free Woven  
4", 5", 6", 9", 10", 12"  
Black, White

# Industrial Safety

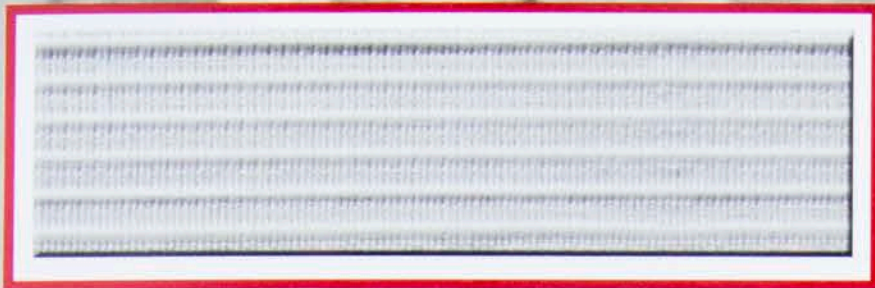
## *Back and Wrist Supports*



742  
Knitted Elastic  
9", 12"  
Black, White

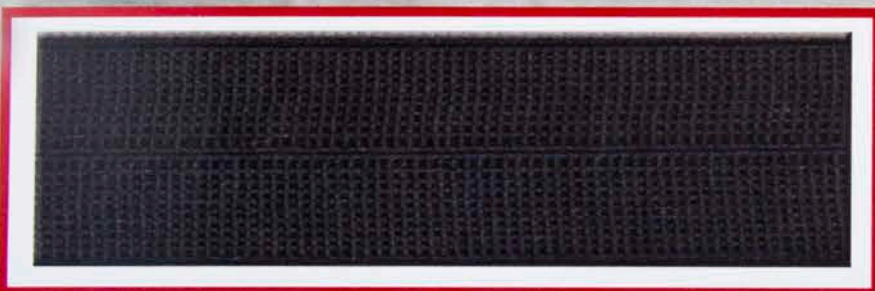
# Industrial Safety

## *Back and Wrist Supports*



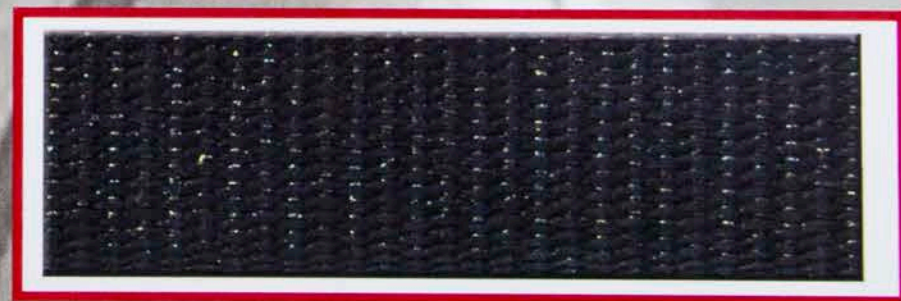
6140  
Braid Substitute  
1/2", 3/4", 1"  
Black, White

900  
Knitted Latex Free Foldover  
1"  
Black



6026  
Woven Foldover  
1"  
Black, Colors

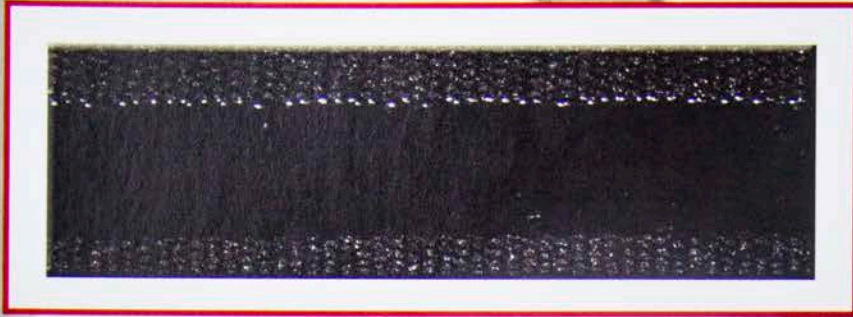
43566p  
Woven Tape  
1", 1.5", 2"  
Black, White



6034  
Woven Tape  
1"  
Black

# Industrial Safety

## *Back and Wrist Supports*



6112  
Rigid Silicone Gripper  
1"  
Black, White

820  
Rigid Knitted Gripper  
1"  
Black



6044  
Woven Elastic Gripper  
1", 1 1/4"  
Black



708  
Knitted Elastic Gripper  
1"  
Black

